

MODIFIED TST-1-99 RAILING:

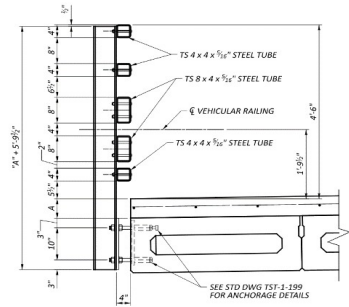
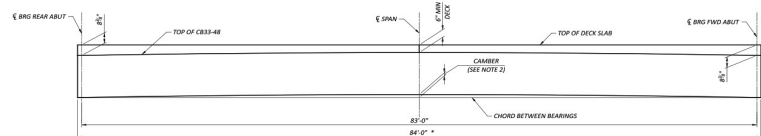
Steel Rail Weight = 0.13 klf (steel rail components and 10% for bolts)

Total Weight 0.13 klf

ADDITIONAL LOADS:

INCREASED DECK THICKNESS DUE TO CAMBER:

Extra thickness due to camber = 2.22 in
 Beam width = 48.00 in
 Concrete Unit Wt. = 0.150 kips/ft³
 Precast DC = 0.11 klf



INTERMEDIATE DIAPHRAGM LOADS

Width = 37.00 in
 Depth = 22.00 in
 Thickness = 1.50 ft
 Concrete Unit Wt. = 0.150 kips/ft³
 Precast DC = 1.27 klf

END DIAPHRAGM LOADS

Width = 37.00 in
 Depth = 22.00 in
 Thickness = 3.25 ft
 Concrete Unit Wt. = 0.150 kips/ft³
 Precast DC = 2.76 klf